

EXCLUSIVE OFFER PRICES FOR PAST PASSENGERS

EAST & WEST OF PANAMA

AN EXPLORATION OF PERU, ECUADOR, COLOMBIA
& PANAMA BY SEA INCLUDING A TRANSIT OF THE
PANAMA CANAL ABOARD THE MS HEBRIDEAN SKY

26TH MARCH TO 12TH APRIL 2020



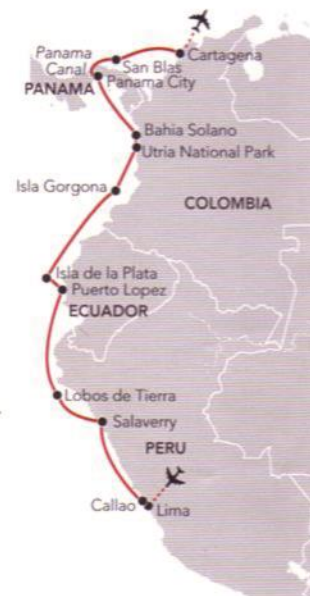
NOBLE CALEDONIA



Let us take you to some of the loveliest, untouched and fascinating places in Peru, Ecuador, Panama and Colombia as we sail from the Pacific coast of Peru to the Caribbean coast of Colombia including a transit through the Panama Canal, top of many a traveller's wish list.

Beginning in Lima, we will sail north along the coast of Peru visiting Chan Chan, a pre-Columbian site of the Chimu culture and the largest adobe city in the world. Also land on Lobos de Tierra, a tiny island off the Peruvian coast, famous for its abundant marine and birdlife. After a day at sea we continue our exploration of this wildlife rich region visiting Ecuador's Machalilla National Park, a protected coastal haven for a huge diversity of birdlife and wildlife. Further north, visit Colombia's Utria National Park with its dense rainforest, mangroves and home to many bird species, reptiles and monkeys. After our transit of the Panama Canal, a 50 mile passage which still continues to astonish the most veteran traveller, we spend time in Panama's stunning San Blas Archipelago where the Kuna Indians proudly preserve their heritage. Our voyage ends surrounded by the colonial architecture of Cartagena, a fitting end to our diverse and fascinating exploration of South America.

Much of our itinerary is far from the 'big ship' routes and a voyage such as this would be difficult to comprehend or undertake by any other means than a cruise. The MS Hebridean Sky is the perfect vessel for such a journey and our Zodiacs will be put to good use in the more remote places allowing us to land and explore otherwise unreachable places. Our experienced expedition team will add much to your enjoyment and knowledge through their lectures and briefings regarding all we will see and experience.



The Itinerary

Day 1 London to Lima, Peru. Fly by scheduled flight. Arrive this evening into Lima and transfer to the Westin Lima Hotel (or similar) for a two night stay. Enjoy the remainder of the evening at leisure.

Day 2 Lima. After breakfast in the hotel we will have a free morning to relax or explore independently. In the early afternoon we enjoy a tour of Lima city, which was founded by the conquistador Francisco Pizarro in 1535, and then named the 'City of Kings' by the Spaniards who took the city in name of the Spanish Crown. See the most important buildings in the Plaza Mayor,

such as the Government Palace, the beautiful cathedral and the various small palaces and colonial balconies that adorn the capital of the Peruvian Republic, all of which was declared a World Heritage Site by UNESCO thanks to its well-preserved architecture. Before we return to the hotel there will be some time devoted to the Larco Herrera Museum where we will be able to admire wonderful displays of Peru's pre-Columbian ceramic and textile art. This evening meet for dinner in the hotel.

Day 3 Lima. Today we will head out of the city to the famous

Pachacamac Temple, a religious compound which dates from the 3rd century and made entirely of clay. Visit the impressive Temples of the Sun and Moon as we learn about the Inca and Pre-Inca people that lived here. After lunch in a local restaurant we transfer to the MS Hebridean Sky, berthed in the port of Callao. This evening enjoy a welcome dinner and drinks as we sail north.

Day 4 At Sea. Spend a relaxing day on board the MS Hebridean Sky. Maybe join a lecture or find a spot on deck.

Day 5 Salaverry. Arrive this morning at Salaverry, our base for a full day of touring. From the port we will drive to the ruins of Chan, a UNESCO World Heritage Site and the imperial capital of the Chimu, where we explore the ruins of the largest adobe city in the world, marvelling at their skillful irrigation and engineering projects. We also visit the intriguing desert city of Trujillo. This oasis city was founded by Pizarro in 1536 and still exudes much Spanish colonial charm. Visit the Casa Urquiaga, a mansion containing pre-Columbian ceramics and the Plaza de Armas with its imposing 17th century cathedral.



Chan Ruins



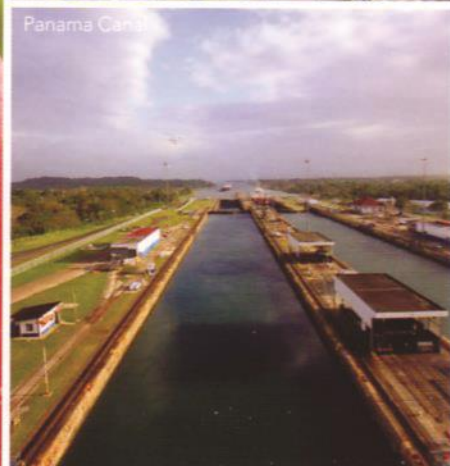
South American sea lions



Frigatebird



Lima



Panama Canal

Return to the ship for lunch and this afternoon we will visit Huaca de la Luna to see the Huaca del Sol pyramids from the Moche culture, a remarkable pre-Inca civilisation, and spend time in the fascinating on-site museum.

Day 6 Lobos de Tierra. Today, weather permitting, will be the first opportunity to use our Zodiacs as we visit the offshore island of Lobos de Tierra. In the 19th century this was the site of a large guano mining centre however today it is an important seabird sanctuary and home to Peruvian pelicans, blue footed boobies and cormorants. We will explore the coastline in the Zodiacs and take walks ashore watching for the birdlife and South American sea lions in the waters.

Day 7 At Sea. Maybe join one of the lectures in the lounge, read a book in the library or watch for wildlife from the deck as we have a day at sea sailing to Ecuador.

Day 8 Puerto Lopez, Ecuador. Today we start our exploration of coastal Ecuador and anchor at Puerto Lopez for an excursion to the Machalilla National Park, an area of great diversity on the juncture of the cold Humboldt current flowing north and the warm El Nino current flowing south. It contains one of the world's largest tropical dry forests, at 55,000 hectares, and is an example of the vegetation that once covered 25% of Ecuador's

land mass. We travel inland to a small village with an interesting archaeological site. Here we will split into groups for our walks to see the varied flora and fauna, including several types of cacti, kapok and palo santo trees that have adapted to the arid conditions, and the many varieties of birds including coastal parrots. We will take lunch in the park before returning to the pleasant fishing village of Puerto Lopez.

Day 9 Isla de la Plata. Around forty kilometres off the Ecuadorian coast is the small island of Isla de la Plata (Silver Island) where it is claimed Sir Francis Drake buried some of his treasure. The island is part of the Machalilla National Park and a sanctuary for sea birds such as the red footed, blue footed and Nazca boobies who share the steep cliffs with frigate birds, albatrosses and the red-billed tropic birds. Today our naturalists will lead nature walks searching for wildlife before sailing in the late afternoon.

Day 10 At Sea. Spend a relaxing day at sea as we sail towards Colombia.

Day 11 Isla Gorgona, Colombia. Once a high security prison island located 50 miles off the Colombian mainland, Gorgona Island has reinvented itself as a natural paradise with golden sandy beaches, fresh water streams, waterfalls and tropical forests. In the mid-1980s the island became a

National Park, the prison converted to a research centre and one of the houses to a museum. We will spend the day on the island and offer a choice of activities including nature walks looking for some of the many species of birds, snakes, sloths and monkeys as well as the blue anole – the world's only blue lizard. Alternatively enjoy a swim or snorkel from the beaches or learn more about the history of the island from the local guides.

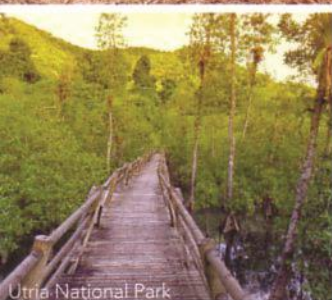
Days 12 & 13 Utria National Park & Bahia Solano. Today we land on the Pacific coast of Colombia and have a day and a half to explore this beautiful area which is well off the traditional cruise routes. Here we find the Utria National Park, a tropical forest which reaches down to the sandy beaches. Using our Zodiacs to get ashore we will enjoy hikes and nature trails and observe the flora and fauna with our local guides. In Bahia Solano we will visit the small town whilst the more active amongst us may wish to join a walk to a private rainforest reserve which runs alongside the Rio Mecana and is part of a 170 hectare nature reserve. Made up of mangroves, tropical forest, native plants and trees of the Choco region, our local guides will point out the indigenous plants and birdlife and highlight the ongoing reforestation programmes. We also hope to offer a chance to swim from the beaches.

Day 14 Panama City, Panama. Panama City is a combination of

the historic old town, declared a UNESCO Historical Monument, and the ultra-modern new town. We will offer a choice of activities today. Join an excursion to the Panama Canal Observation Centre and learn about the expansion of the canal before visiting the Miraflores Locks Visitor Centre where we see the history of the canal and watch the ships as they pass through. Alternatively, for those interested in meeting the Embera Indians, a tour to the Chagres National Park has been arranged where we can take a dug out canoe to the village in the jungle, meet the local tribe and learn about their history.

Day 15 Panama Canal Transit. An undisputed destination on the travel bucket list must be the Panama Canal. The first attempt to build the canal was made by a French company but ended in failure in 1889. The American government eventually bought out the French for 40 million dollars, and their attempt to build the Canal started in 1904. Through the efforts of over 80,000 workers and the loss of more than 30,000 lives, the greatest single construction project ever undertaken was completed. The project ended in triumph, with the Canal opening in 1914, and it is now a vital artery of international trade, with nearly 14,000 ships travelling through it every year. The canal is around 50 miles long and takes between eight to ten hours to cross.

Isla de La Plata



Utria National Park

Cartagena, Colombia



Day 16 San Blas. Spend the morning at the stunning San Blas Archipelago. The archipelago is made up of over 400 islands which line the north coast of Panama with white sandy beaches set in a turquoise sea. The islands are home to the indigenous Kuna Indians who gained self-rule from the government of Panama in the 1920s and maintain their traditional way of life including the production of colourful fabric art known as 'molas'. Choose to join a nature walk or maybe enjoy a swim from the beach. Return to the ship for lunch and a relaxing afternoon at sea.

Day 17 Cartagena, Colombia to London. Cartagena is one of the most fascinating cities in South America and after disembarking this morning we enjoy a walking tour of the colonial walled-city which is virtually surrounded by water and steeped in history, with a wealth of 16th and 17th century buildings and churches. Our guides will bring the history of the city to life as we walk its streets and ramparts. After lunch in a local restaurant we will transfer to the airport for our scheduled indirect flight to London.

Day 18 London. Arrive this morning.

PRICES PER PERSON

Based on double occupancy

EXCLUSIVE OFFER PRICES FOR PAST PASSENGERS

Deck	Suite Category	Brochure Price	Special Offer Price
Amundsen	Standard	£9295	£5995
Byrd	Superior	£9495	£5995
Mawson	Premium	£9995	£5995
Mawson	Corner	£10495	£5995
Scott	Deluxe Balcony	£11495	£6495
Shackleton	Owner's Balcony	SOLD OUT	SOLD OUT
Shackleton	Hebridean	SOLD OUT	SOLD OUT
Amundsen	Standard for sole use	£11495	£5995
Byrd	Superior for sole use	SOLD OUT	SOLD OUT

PRICE INCLUDES: Economy class scheduled air travel • Two nights hotel accommodation in Lima with breakfast • Dinner on day 2 & lunch on day 3 • 14 nights aboard the MS Hebridean Sky on a full board basis • Wine, beer & soft drinks with lunch & dinner • Shore excursions • Noble Caledonia onboard team • Gratuities • Transfers • Port taxes.

Not Included: Travel insurance, visas.

Post-Cruise Colombia Extension

11th to 17th April 2020

Bogota



Upon disembarking the MS Hebridean Sky we are offering a five night extension in Colombia to further explore this varied and fascinating country.

The Itinerary

Day 1 Cartagena, Colombia. Spend the morning as per day 17 of the main itinerary. After lunch transfer to the Grand Hyatt Hotel (or similar) for an overnight stay including dinner.

Day 2 Cartagena to Medellin. After breakfast in the hotel transfer to the airport for our scheduled flight to Medellin. Upon arrival enjoy lunch in a local restaurant before we check-in to the Hotel Park 10 (or similar) for our two night stay. Colombia's second largest city, Medellin is located among the fertile green hills of the Antioquia region and its nickname 'the city of eternal spring' is immediately apparent in its almost year round temperate climate. Before dinner join a tour of the historic town centre and visit the Antioquia Museum housing one of the world's largest collections of Fernando Botero paintings.

Day 3 Medellin. This morning we will further explore the city including a scenic ride on the Metrocable, a gondola built to help locals commute from mountainside towns into the city. We will also learn more about the urban regeneration projects of Medellin. After lunch the afternoon will be at leisure to explore independently or relax in the hotel. Meet this evening for dinner.

Day 4 Medellin to Bogota. Colombia is famous for its coffee and this morning we will head out of Medellin into the surrounding countryside. See the production process from coffee bean to cup at a coffee roastery and further explore the history and culture of Colombian coffee. After lunch return the Medellin airport for our scheduled flight to Bogota. Upon arrival transfer to the Sofitel Victoria Regia Hotel (or similar) for our two night stay. Enjoy dinner this evening in a local restaurant.

Day 5 Bogota. Bogota is a melting pot of people from around Colombia, it is diverse and multi-cultural, with a wonderful blend of modern and colonial architecture. On a full day tour which will include lunch, we will visit the historic downtown area of Candelaria, full of small cobbled streets and excellent museums including the Gold Museum where objects crafted by the Muiscas, the first ever populations inhabiting Bogota are carefully exhibited. Spend time at the Paloquemao flower and fruit market before we travel up to Monserrate Hill top for magnificent views over the capital. Return to our hotel in the late afternoon and meet for dinner this evening.

Day 6 Bogota to London. Check-out from the hotel after breakfast and transfer to the airport for our scheduled flight to London.

Day 7 London. Arrive this morning.

PRICES PER PERSON

Based on double occupancy

Twin: £2145; Single: £2695

Price Includes: Overnight hotel accommodation in Cartagena, two nights hotel accommodation in both Medellin & Bogota, scheduled internal flights, all meals as mentioned in the itinerary, excursions and transfers as described, English speaking guides, Noble Caledonia Tour Manager, gratuities.

Not Included: Travel insurance.

MS HEBRIDEAN SKY



Al fresco dining



Owner's Balcony Suite



The Restaurant

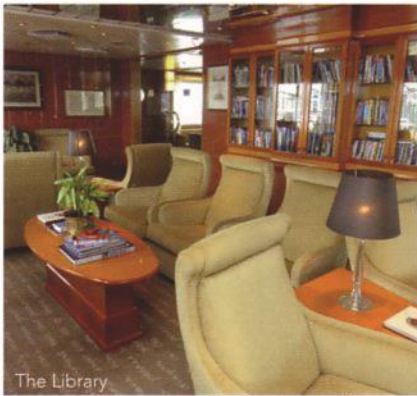
The MS Hebridean Sky is one of our three flag ships and sister vessel to the MS Island Sky and MS Caledonian Sky. All three vessels were built in the same ship yard in Italy at similar times and share the same excellent attributes that make them three of the finest small ships in the world. With a maximum passenger capacity of only 118, a vessel of her size is capable of carrying many more but instead the MS Hebridean Sky has the benefit of unusually large suites, luxuriously appointed public areas and spacious outside decks.

Your Suite

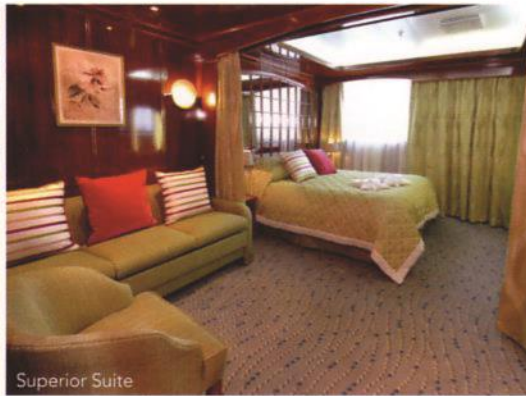
On board there are 59 exceptionally spacious and well-designed suites. All feature a sitting area and some have private balconies. The feeling of luxury is enhanced by the wood panelling and brass, which predominates throughout the vessel conveying the atmosphere of a private yacht. The passenger accommodation is arranged over five decks and all suites have outside views with those on the Scott and Shackleton Decks featuring private balconies. Each suite affords considerable comfort with en-suite bathroom featuring vanity unit with sink and walk-in shower, large wardrobes, dressing table with large mirror and stool and excellent storage. There is a mini-fridge, flat screen television and a telephone in each suite. Refillable water bottles, towelling dressing gowns and slippers are also provided for your comfort. Other facilities include a programmable electronic safe, hairdryer, assorted Molton Brown toiletries and individually controlled air-conditioning and heating. Soft hues and blended tones enhance the traditional maritime style making the passenger accommodation an inviting and relaxing place to be.

Your Dining

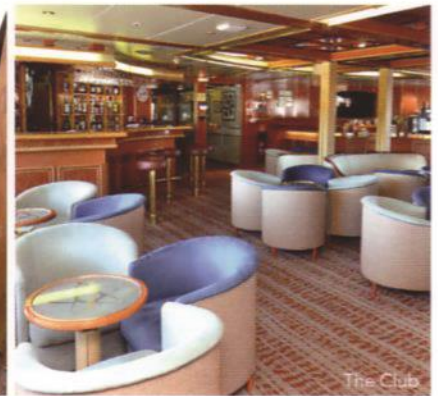
With only one sitting and a maximum of just over 100 passengers, the cuisine on board the MS Hebridean Sky is of a consistent superior quality that befits such a vessel. In keeping with the informal atmosphere on board, when dining you are able to choose your seating arrangements and choice of restaurants at your leisure; whether that be joining a table of four to six other passengers in the elegant à la carte Restaurant or, outside buffet-style on the Lido Deck in the evening sunshine. In the main Restaurant, breakfast is served buffet-style, with certain items cooked to order on request. Lunch and dinner menus offer plenty of choice, often reflecting the daily catch and local delicacies. The Welcome and Farewell dinners are a sumptuous five course affair. To enhance your dining experience further a selection of wines is included with both meals. Afternoon tea and pre-dinner canapés take place in either the comfort of the Lounge or out on the Lido Deck when the weather is favourable. Tea and coffee are also available 24 hours a day. Special diets can be catered for with sufficient notice.



The Library



Superior Suite



The Club

Your Space

The spacious and finely decorated public rooms include a large Lounge on the Byrd Deck featuring a selection of seating options from individual armchairs and sofas to side cushioned benches. Daily briefings given by the Cruise Director and talks from Guest Speakers and expedition staff take place in the Lounge. In addition to the main Lounge, there is also The Club, located on the Mawson Deck which features the main bar where the onboard pianist plays periodically throughout the day. The Club also features a 24-hour tea and coffee station. Towards the aft of the ship on the Mawson Deck is the Library. Well stocked with reference books pertaining to the destinations the vessel is visiting and a selection of essential reads, you will not find yourself short of excellent literature on board. A collection of games and devices to access the internet via the ship's satellite can also be found in the library. Access to the ship's satellite Wi-Fi via your own device is complimentary on board (signal strength varies depending on location and demand). The main Restaurant, which can seat all guests at one sitting, is located on the Amundsen Deck, and outside there is a rear Lido Deck located on the Scott Deck where meals are served in warm weather under shade. Further to this on the top Shackleton Deck there is an observation area, complete with sun loungers for sunbathing, relaxing with a book or catching up with fellow travellers. The Promenade Deck wraps around the whole ship providing outstanding views. There is also a small beauty salon on board with appointments made on request.

Your Comfort

The MS Hebridean Sky is equipped with the latest safety, navigation and communications equipment along with roll stabilisers to minimise the ship's motion. During your voyage we hope to offer you the opportunity to visit the Captain and Officers on the Bridge to check the vessel's progress by charts and learn more about your journey. On board you will also find a clinic and Doctor and a lift that serves all decks. When at anchor our nimble Zodiacs will ferry you ashore or, on select cruises, enjoy Zodiac cruises getting you closer to the natural world.

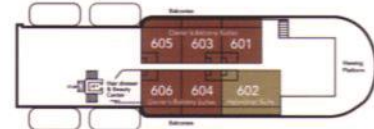
Your Life On Board

The atmosphere on board is warm and convivial and more akin to a private yacht or country hotel in which you can learn more about the wonderful destinations you are visiting in the company of like-minded people. There is a high ratio of crew to passengers and our friendly crew of 75 are mainly Filipino and Eastern European and our Scandinavian Captains are experienced mariners. After a day ashore you will return to the comfort and peace of a well-run and exceedingly comfortable ship where peace, high quality of service and attention to detail are the order of the day. A little music in the Lounge or bar after dinner, Guest Speakers and informative port briefings and of course good food, all contribute to make any voyage aboard this wonderful vessel a memorable and joyful experience.

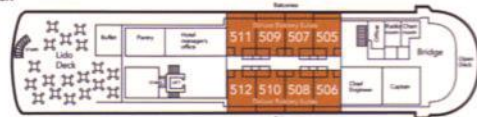
MS HEBRIDEAN SKY DECK PLAN



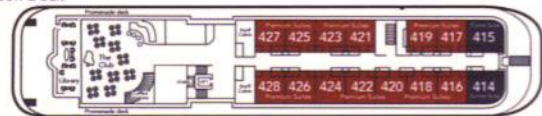
Shackleton Deck



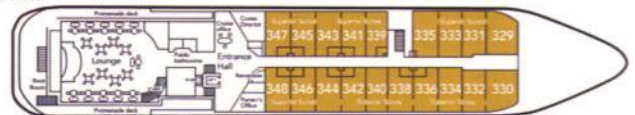
Scott Deck



Mawson Deck



Byrd Deck



Amundsen Deck



- Standard Suites
- Superior Suites
- Premium Suites
- Corner Suites
- Deluxe Balcony Suites
- Owner's Balcony Suites
- Hebridean Suite

Please note that beds in each suite can be configured as double or twin with the exception of suites 601 and 602 which feature a fixed double bed.



During this voyage you will be visiting out of the way destinations and will be accompanied by an expedition team. Landings and excursions will be made by Zodiac landing craft. This cruise will appeal to the more adventurous and those who enjoy the natural world.



NOBLE CALEDONIA

2 Chester Close, Belgravia, London, SW1X 7BE
+44 (0)20 7752 0000 | info@noble-caledonia.co.uk | noble-caledonia.co.uk

